



# Door Sensor Installation Manual

+1 (650) 600-0008 | [www.TruckX.com](http://www.TruckX.com)

# Thank You for Choosing TruckX!

Thank you for choosing TruckX as your Telematics & Fleet Management Partner. We're excited to be part of your fleet's success.

Please read this manual carefully to ensure the correct installation of the Door Sensor. If you have any questions or need assistance at any point, reach out to our Customer Support Team anytime at [\(650\) 600-0008](tel:6506000008) or [Support@TruckX.com](mailto:Support@TruckX.com).

You can check our installation video if necessary. [Click here](#)

This manual is periodically updated to enhance performance and may change without prior notice.

Thank you again for your trust in TruckX!

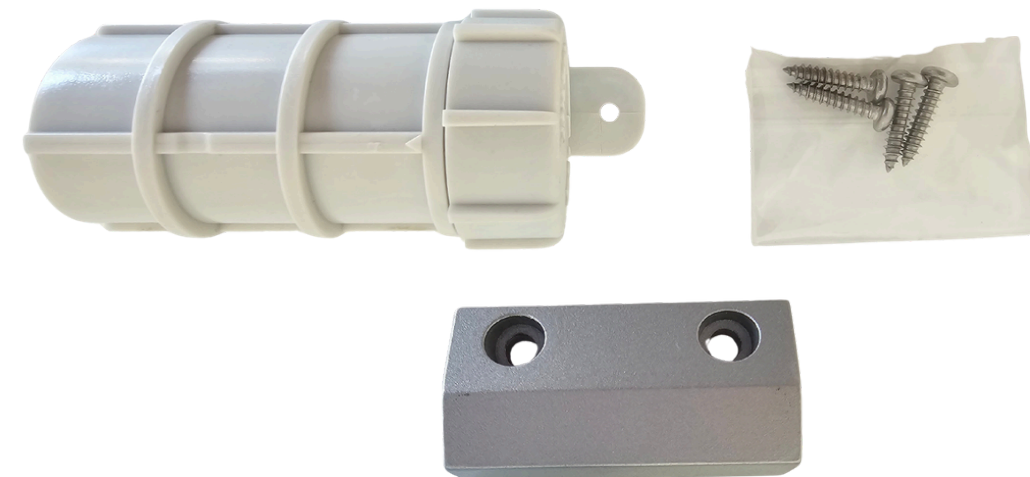


# Index

- ① Product Design Blueprint
- ② Explanation of LED Indicators
- ③ Packaging List
- ④ Product Installation Notes
- ⑤ Product Specifications/Features
- ⑥ Product Installation
- ⑦ Check Connection
- ⑧ Adding a Door Sensor to the FMS

# Packaging List

- ① Door Sensor
- ② Magnet
- ③ Screws



# Explanation of LED Indicators

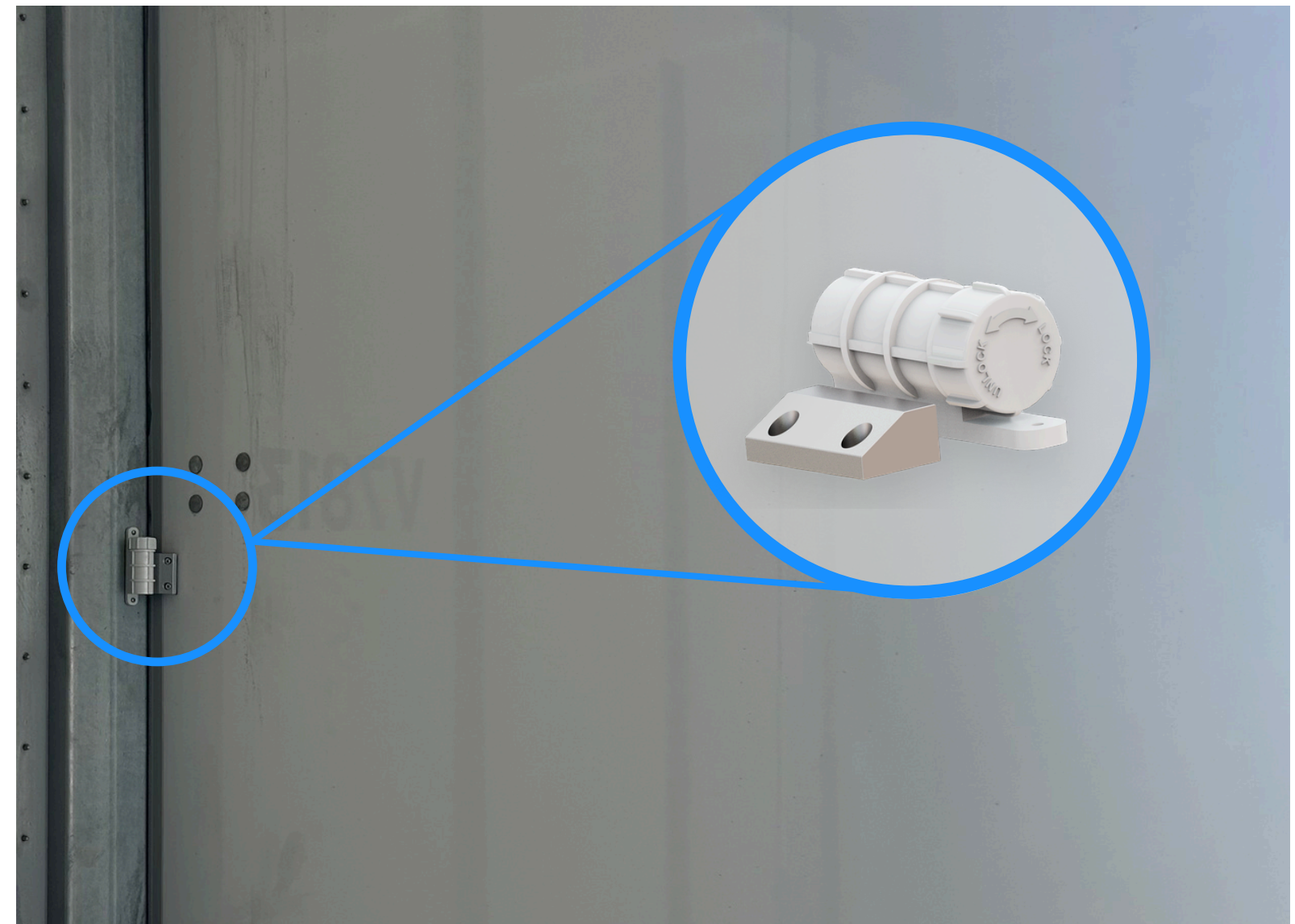
## Door Sensor LED (Status Indicator)

- Blinking: Device powered ON and active
- Not Blinking: Device OFF / Battery issue (check battery health)



# Product Installation Notes

- Ensure the sensor and magnet are securely mounted on the door using screws or adhesive tape.
- Maintain a maximum distance of 3 cm between the sensor and magnet for optimal performance.



# Product Specifications/Features

- Bluetooth: 5.0
- Battery: Replaceable CR2 (1000mAh)
- Battery Life: Upto 6 Years
- Transmission Range: Up to 300m (Open Field)
- Sensor Connectivity: Wireless sensor sync
- Dimension: 91.2mm\*30.5mm\*39.1mm
- Weight : 52g
- Installation: Under 2 minutes
- Build-in Temp Sensor Accuracy:  $\pm 3^{\circ}\text{C}$
- Security: Door alarm alert enabled
- Power Output: +4 dBm
- Transmission Range: Up to 300m (Open Field)
- Operating Temperature:  $-40^{\circ}\text{C} \sim +85^{\circ}\text{C}$   
( $-40^{\circ}\text{F} \sim 185^{\circ}\text{F}$ )
- Temp Environment(for Battery Only):  $-30^{\circ}\text{C} \sim +60^{\circ}\text{C}$   
( $-22^{\circ}\text{F} \sim 140^{\circ}\text{F}$ )

# Check Connection

## **Power-On Confirmation**

Ensure the Door Sensor is powered on. Check if the red LED is blinking. If there is no LED activity, open the device and verify that the battery tape is removed, or replace the battery if needed.

## **Device Connection Check**

Confirm the device status shows “Connected” in the Fleet Management System (FMS). If it shows “Pending” or “Error,” ensure the device is added correctly and assigned to the right vehicle.

## **Bluetooth Connectivity Check**

Ensure a compatible TruckX device (such as an Asset Tracker) is nearby. The Door Sensor relies on Bluetooth to transmit data, so both devices should be within the same range.

## **Door Status Validation**

Open and close the door to verify that the status updates correctly in the Fleet Mobile App or Web Portal. If not, check the alignment and distance between the sensor and magnet ( $\leq 3$  cm).

# Product Installation

## Step 1:

- Open the back cover of the sensor and remove the battery protection tab
- Once activated, the red LED will start blinking

## Step 2:

- Close the back cover securely
- Install the sensor on the truck's door

## Step 3:

- Ensure the sensor and magnet are properly aligned and positioned parallel to each other



# Adding a Door Sensor to the FMS

1. Begin by logging into the TruckX Fleet Management System (FMS) for seamless access.
2. Navigate to the “**Devices**” section.
3. Within the “**Devices**” section, select “**Sensor**”
4. Choose your preferred setup method: “Scan QR Code” or “Bluetooth Scan” to detect the device.
5. If selecting “**Scan QR Code**,” simply scan the code on the device to proceed.
6. In the pop-up window, enter the following details:
  - a. Device Name
  - b. Device ID (IMEI)
  - c. Assign to (Truck or Trailer)
7. Click “**Confirm**”
8. The Door Sensor has now been successfully added to the account.



# All-In-One Fleet Management Platform

